

# PRECISION COLLIMATION TECHNOLOGY

## HORIZON Collimation & Alignment Systems

Besides providing quality instruments and accessories, HORIZON also offers precise collimator and alignment systems for vendors which are serious about the instruments they sell.

HORIZON offers a full range of Optical Collimators in single or multi-tube set ups, and a Laser Collimator for checking and adjustment of laser instruments.

Our complete range includes instrument stands and a Tribach adjustment devices which is available on demand.

To ensure the highest precision standards, all HORIZON's Collimation and Alignment Systems undergo strict quality control before being shipped out to our customers.



**Optical Collimator Model 60**  
HZ WSOCM60



**3 Tube Collimator Model 80**  
HZ WS03TC



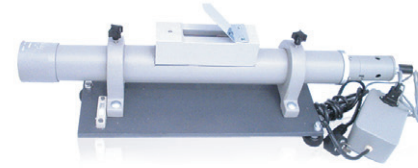
**5 Tube Collimator Model 90**  
HZWS05TC



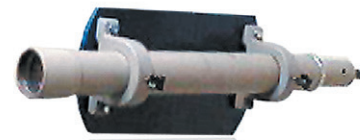
**Dual Tube Collimator Model 70**  
HZ WS02TC

# PRECISION COLLIMATION TECHNOLOGY

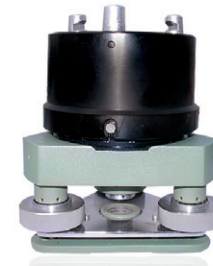
Collimator Specifications	Optical Collimator Model 60	Dual Tube Collimator Model 70	3 Tube Collimator Model 80
Focal Length	F = 550mm	F = 420mm	F = 420mm
Relative Aperture of Objective	D/f = 1/10		
Reticule for Checking Shortest Focusing Distance for Horizontal Tube	2m		
Angle between two Collimators	30° ± 15'		
Reticule Graduation	30" / Graduation	20" / Graduation	20" / Graduation
<b>Reticule Graduation Range</b>			
Horizontal	± 30'	± 20'	± 20'
Vertical	± 30'	± 20'	± 20'
Size of Centering Screw for securing of instruments into test position	5/8"		
Sensitivity of Levelling Bubble	20"	10"	10"
Step Down Transformer	220V to 6V		
Voltage of light bulb for Reticule Illumination	6V	5V	5V
Current of light bulb	0.3A		
Physical Dimension (L x W x H) cm	94 x 30.4 x 58.5	75 x 40 x 70	75 x 40 x 85
Weight	85kg	90kg	110kg



**Collimator for adjustments & calibration of Laser instruments**  
HZ WSLC01



**Collimator 550**  
HZ WSCM550



**Tribrach Optical Plummet Alignment Tool**  
HZ WSTB01

## Laser Collimators

This device is used for the Collimation and Adjustment of Laser Instruments like Multi-line Lasers, Rotating Lasers plus others.

Collimator Specifications	Laser Collimator	Collimator 550
Focal Length	F = 550mm	
Relative Aperture of Objective	D/f = 1/10	
Reticule for Checking Shortest Focusing Distance for Horizontal Tube	∞	-
Reticule Graduation	-	20" / Graduation
Sensitivity of Levelling Bubble	8"	-
Step Down Transformer	220V to 6V	220V to 6V
Voltage of light bulb for Reticule Illumination	6V	
Current of Light Bulb	0.3A	
Physical Dimension (L x W x H) cm	68 x 20 x 24	70 x 17 x 12
Weight	14kg	7.5kg



**Instrument Stand with adjustable height and illuminated Crosshair**  
HZ WSBW1

## Features of Instrument Stand

- Weight : >100kg
- Adjustable height
- Screw type base mounting
- Standard 5/8" thread connection to instrument
- Illuminated Crosshairs